



SERVICIOS SOCIALES (DIF)  
RESIDENTA DEL DIF MUNICIPAL  
C. VALERIA NIETO REYNOSO

SECRETARIA MUNICIPAL  
SECRETARIO MUNICIPAL  
ING. ALFREDO DE LA CRUZ

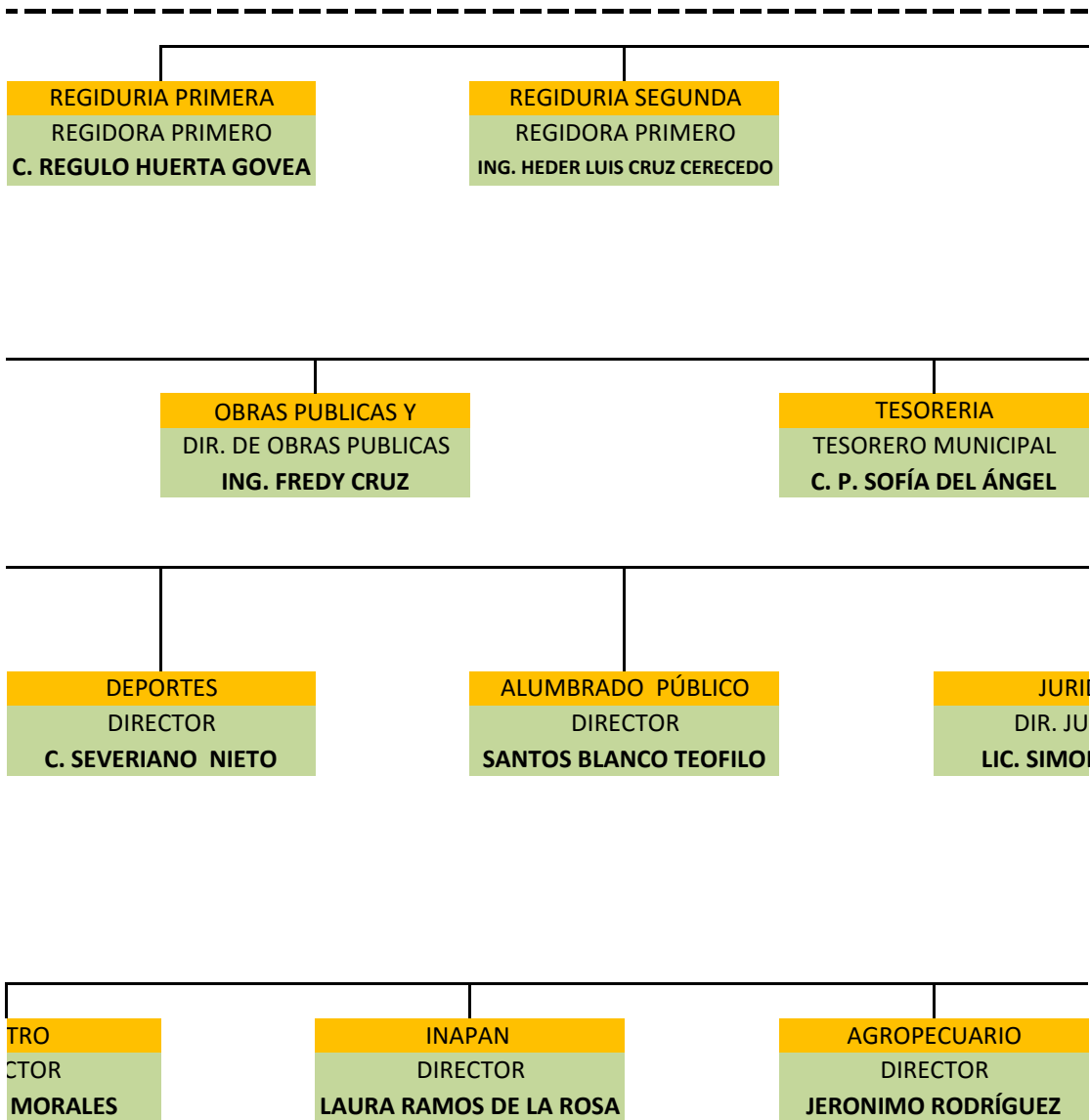
TALLER  
DIR. DE TALLER MEC.  
JOSÉ ALVARO FARIAS WONG

DESARROLLO SOCIAL  
DIR. DE SEDESOL MUNICIPAL  
ESTEBAN DE LA PORTILLA

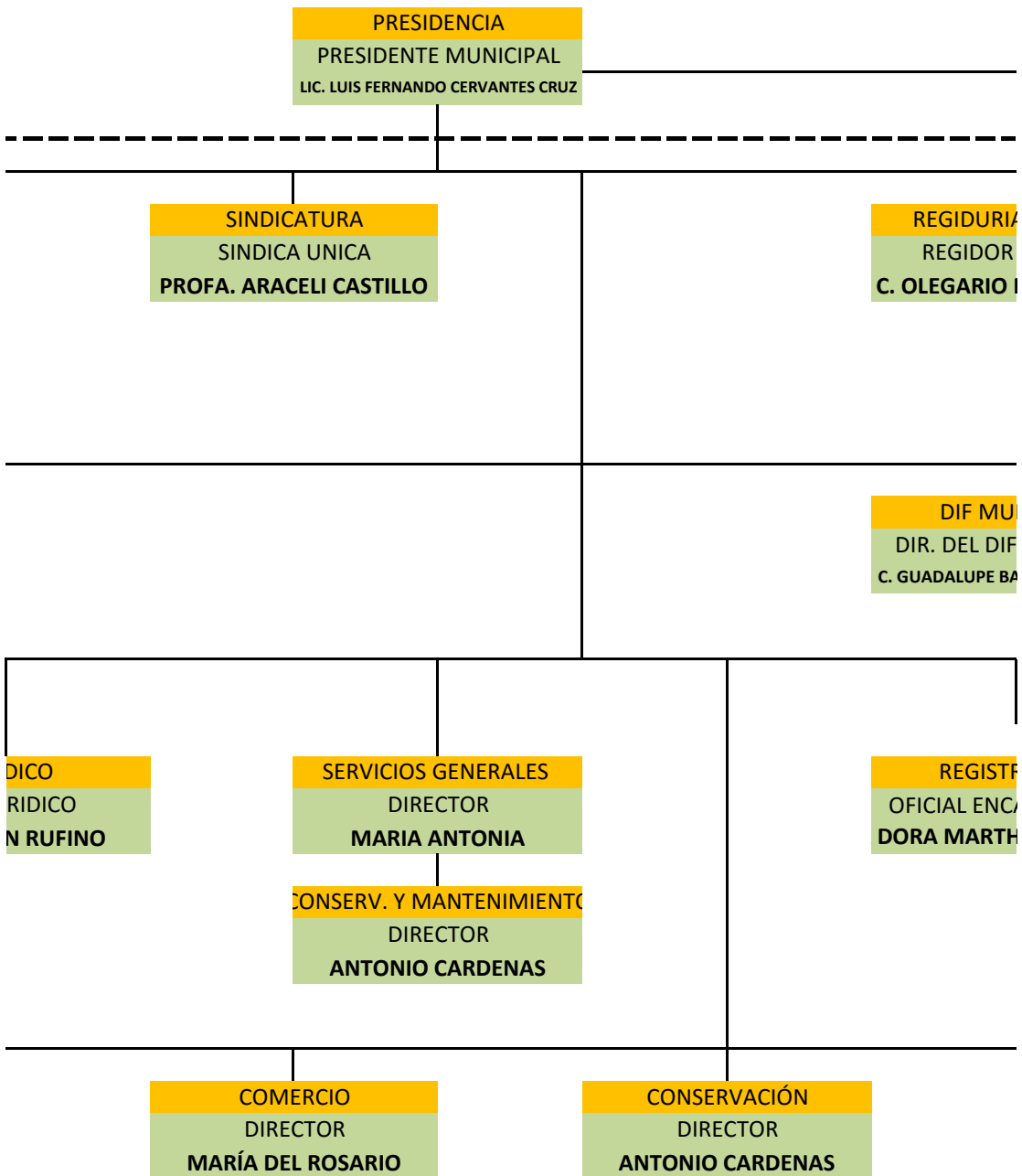
ALCHOLES  
DIRECTOR  
EDUARDO AGÜERO ROJAS

PANTEÓN MUNICIPAL  
DIRECTOR  
MARTINA LÓPEZ MAR

RAS  
DIREC  
ROSENDO



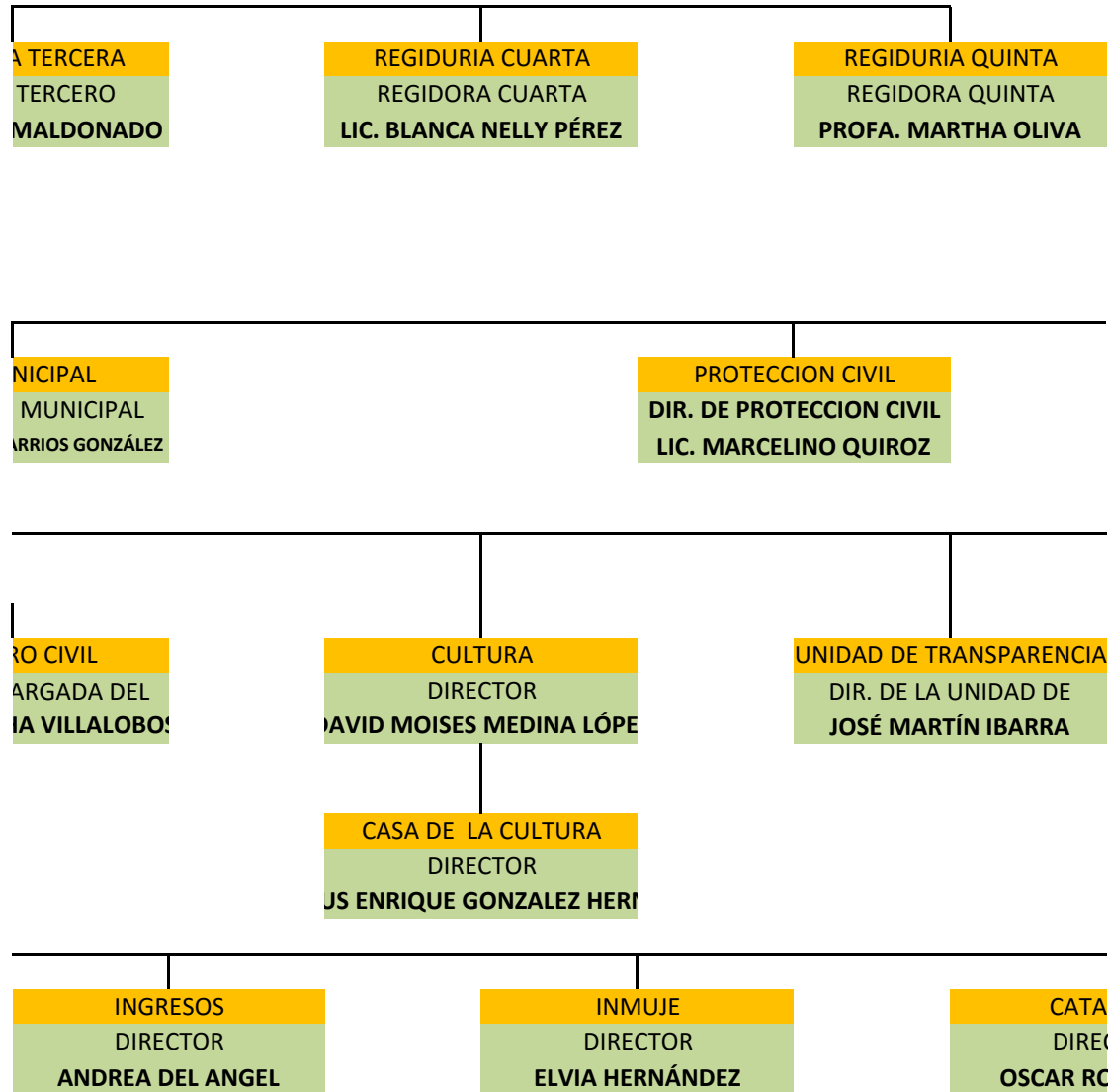
**MUNICIPIO DE PUEBLA  
ADMINISTRACION 2  
ORGANIGRAMA CORRESPONDIENTE**

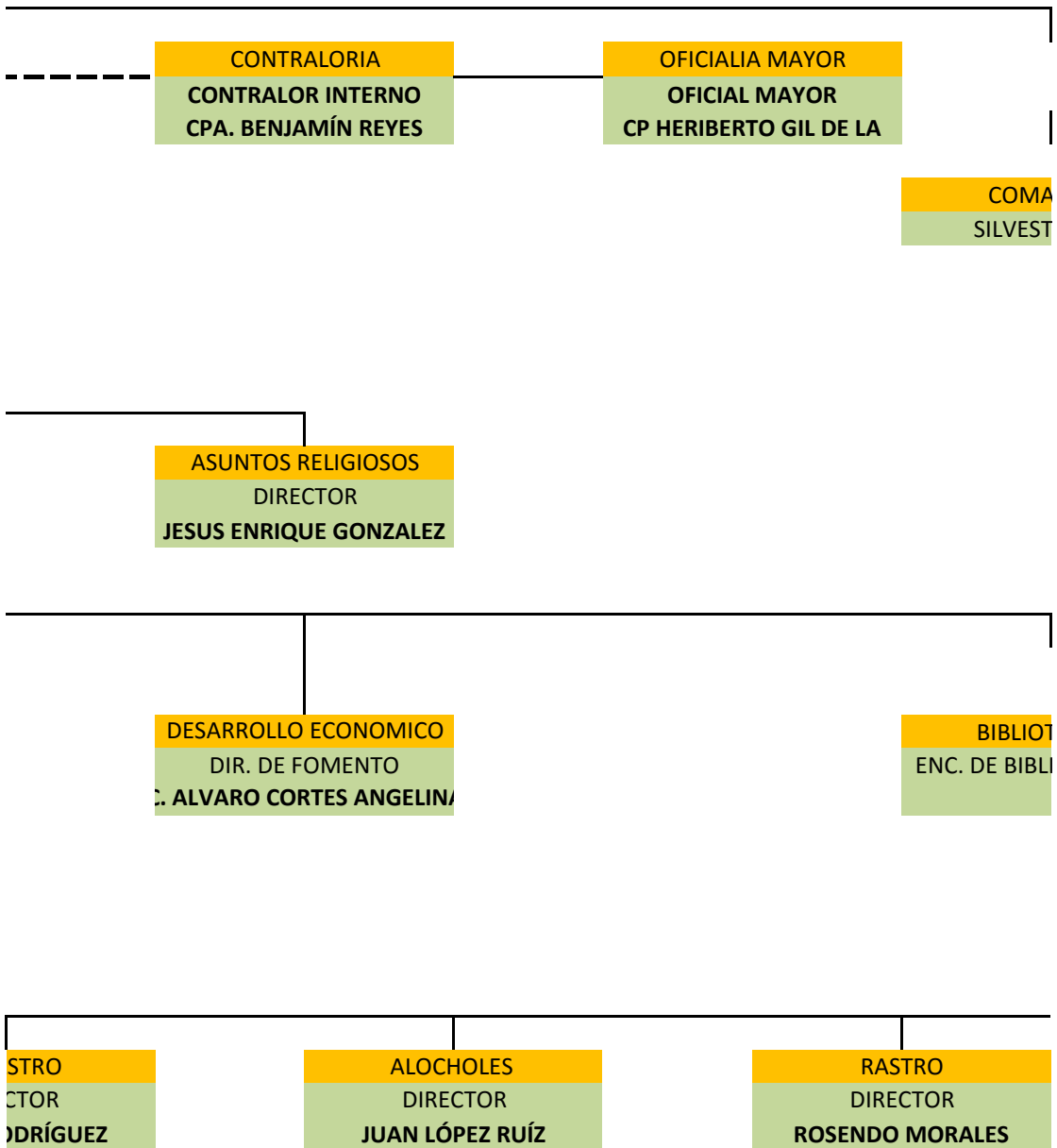


**) VIEJO, VER.**

**2018-2021**

**AL EJERCICIO FISCAL 2019**







INDANTE DE POLICIA  
RE AGUILAR MEDELLIN

TECA  
OTECA

EVENTOS  
DIRECTOR  
SERGIO RIOS RUBIO

COM. S  
DIREC  
CARLOS ENRIC

PANTEONES  
DIRECTOR  
MARTHA LUISA DELGADO

SOCIAL  
CTOR  
QUE HERRERA